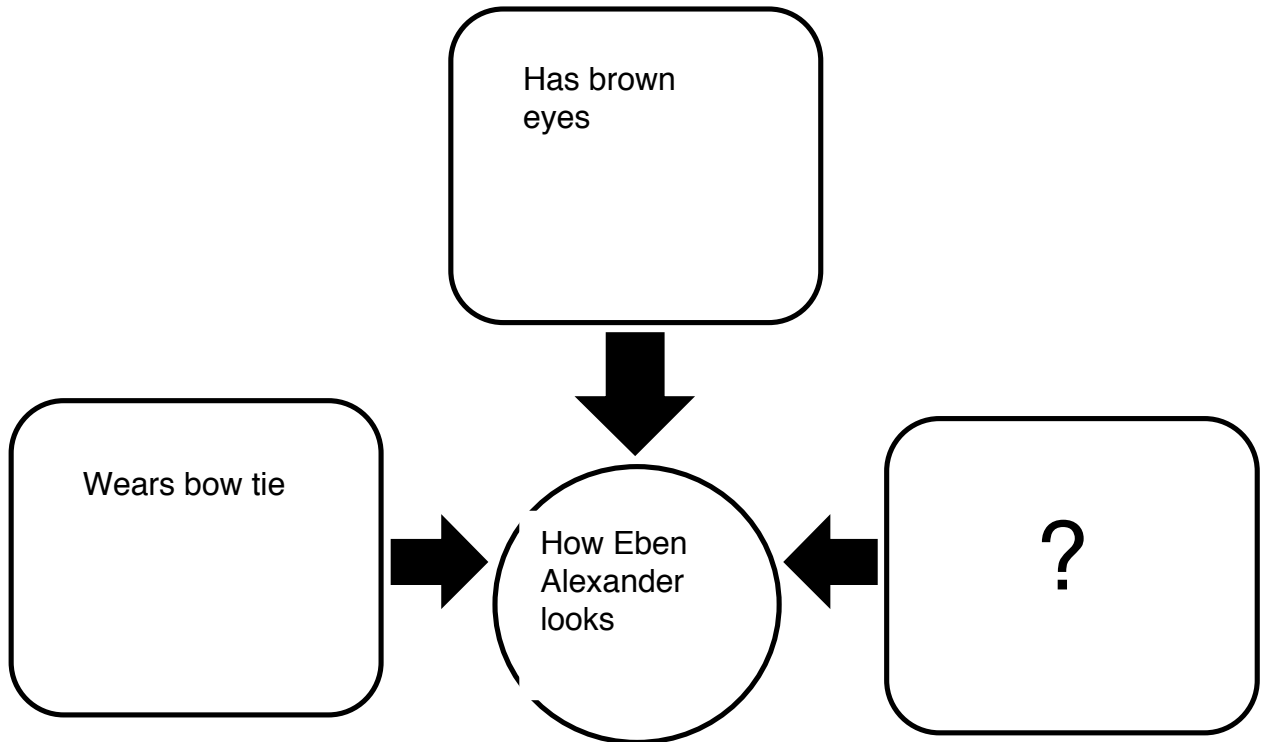


In alphabetical order: Eben Alexander, Jim Avett, Jim Beatty, Joey Cheek, Anson Dorrance, Charles Hadley, Franklin McCain, Jonathan Reckford, Tom Ross and Bellamy Young.

Eben Alexander

1.



1. Study Eben Alexander’s photograph. Which belongs in the block with the ? ?
 - A. auburn-haired
 - B. blond-haired
 - C. dark-haired
 - D. long-haired
2. How did adoption affect Alexander?
 - A. questioned his identity
 - B. sought his biological parents
 - C. wrote a book about the afterlife
 - D. made him grateful for his adoptive family

3. Which best demonstrates Alexander's early interest in science?
 - A. He played sports.
 - B. He kept a journal.
 - C. He built model airplanes.
 - D. He conducted experiments.

4. Where did Alexander attend school?
 - A. UNC and Duke
 - B. UNC and Harvard
 - C. UNC and Lynchburg
 - D. UNC and Stanford

5. What has Alexander written about?
 - A. adoption
 - B. afterlife
 - C. neurosurgery
 - D. parenting

6. What is the best description of Alexander's message?
 - A. Science and faith are inseparable.
 - B. Science and religion can co-exist.
 - C. Science and religion are contradictory.
 - D. Science and faith question the afterlife

7. Which does a skeptic do?
 - A. aspires
 - B. believes
 - C. questions
 - D. worries

8. Which describes "Proof of Heaven," written by Eben Alexander?
 - A. bestseller
 - B. devotional
 - C. textbook
 - D. website

9. What surprised Alexander's sister about her brother?
 - A. his leaving medicine
 - B. his writing a bestseller
 - C. his having a film contract
 - D. his interview with Oprah Winfrey

ANSWERS:

1-C, 2-D, 3-D, 4-A, 5-B, 6-B, 7-C, 8-A, 9-B

WORDS: What does the text tell you about an attribute or meaning of the following words? What clues do you find in context? Does any word have a prefix or suffix, similar word or word within the word that aids in defining the word?

1. passport
2. apathy
3. unconditional
4. passionate
5. miniscule

WORDS (parentheses offer text and other clues to meanings of words):

1. passport (different locations, stamped)
2. apathy (associated with/ result of dwindling faith)
3. unconditional (acts “like a brother,” ‘not’ conditional)
4. passionate (demonstrated by developing procedures and teaching; “passion” refers to deep feeling)
5. miniscule (refers to details, contrasted with having “big picture”)

WRITING PROMPT:

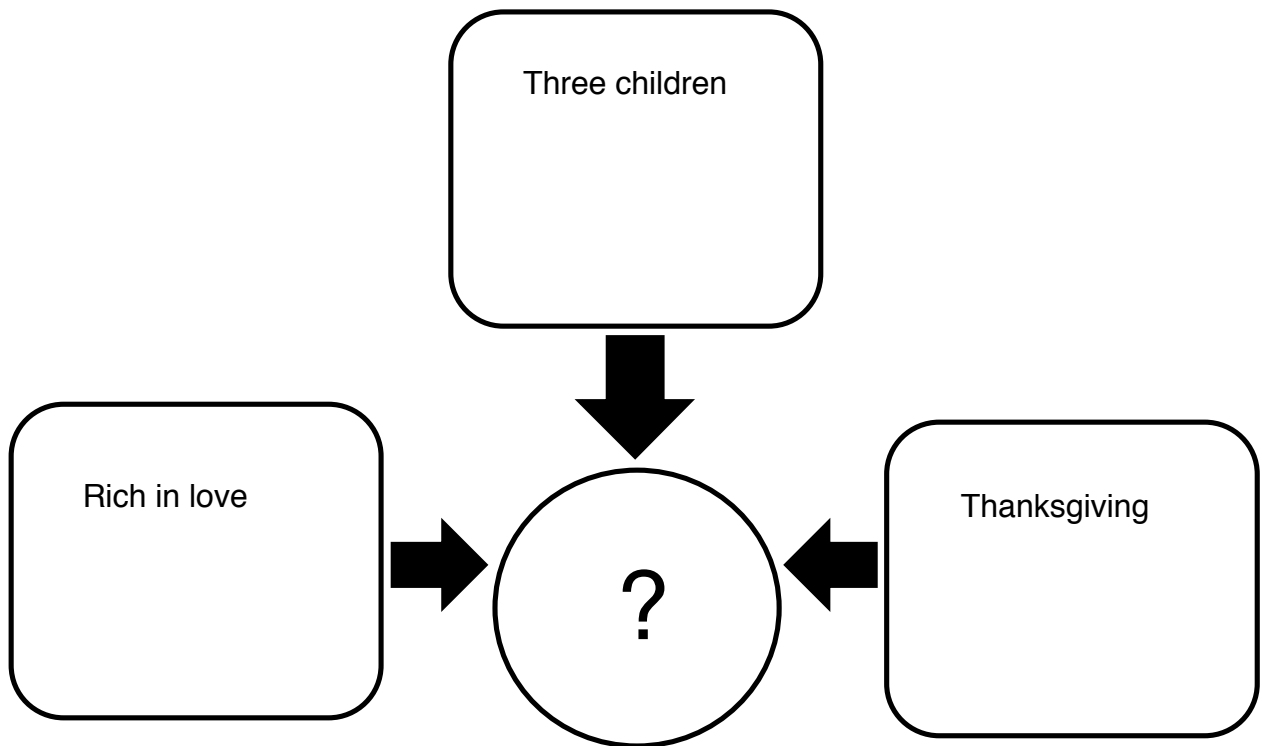
Eben Alexander experienced a life-changing event. Compare the event Alexander experienced with other life-changing events reported in the news. Outline what you learn about Eben Alexander and another person in the news, using a Venn diagram or other comparison/ contrast organizers.

Use your completed outline to compare the two (Alexander and other person).

Jim Avett

1. Which describes Jim Avett?
 - A. introverted
 - B. laidback
 - C. private
 - D. sociable
2. What does Avett do to learn the truth?
 - A. attends church
 - B. listens to music
 - C. reads nonfiction
 - D. works as a journalist
3. What lines the upstairs room in his home?
 - A. autographed photos
 - B. guitars

- C. music stands
 - D. rare books
4. Which is the topic of his favorite “Avett Brothers” song?
- A. animals
 - B. beaches
 - C. community
 - D. family
- 5.



5. Which belongs in the circle with the ? above?
- A. animals
 - B. beaches
 - C. community
 - D. family
6. Why did the Avett Brothers choose *Mignonette* as the title for their 2004 album?
- A. Mignonette represents generosity.
 - B. Mignonette represents honesty.
 - C. Mignonette represents survival.
 - D. Mignonette represents unity.

7. How has the fame of his sons, Scott and Seth Avett, affected Jim Avett, according to the profile?

- A. He stopped farming.
- B. He picked up the guitar.
- C. He performs with his sons.
- D. He draws more people to concerts.

8. What do Avett's final comments indicate about what he believes?

- A. People have one life to live.
- B. Success requires hard work.
- C. Fame comes to those who keep trying.
- D. Family members should support each other.

ANSWERS:

1-D, 2-C, 3-B, 4-B, 5-D, 6-B, 7-D, 8-A

WORDS: What does the text tell you about an attribute or meaning of the following? What clues do you find in context? Does any word have a prefix or suffix, similar word or word within the word that aids in defining the word?

- 1. gregarious
- 2. honesty
- 3. clan

WORDS (parentheses offer text and other clues to meanings of words):

- 1. gregarious (willing to talk about anything)
- 2. honesty (not covering up, regardless of consequences)
- 3. clan (similar to family)

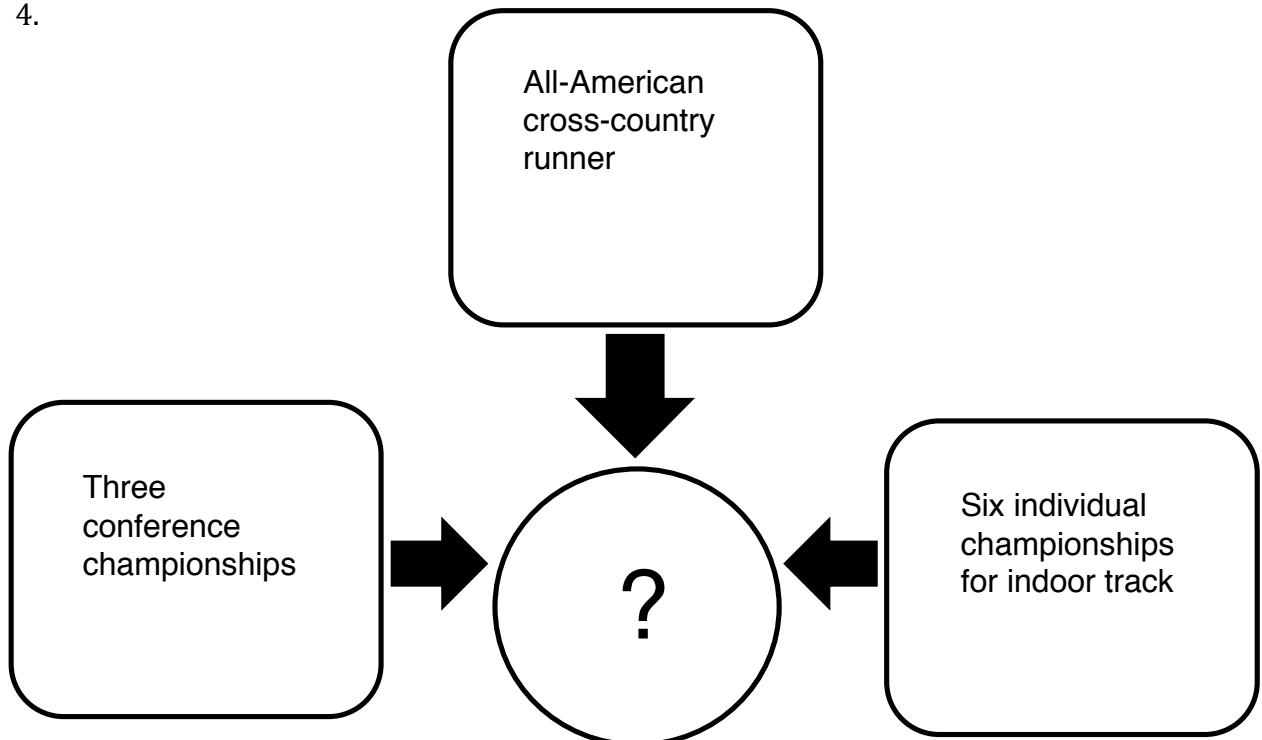
WRITING PROMPTS:

Identify another musician who has maintained a strong connection with his/her hometown (country/western star Dolly Parton, for example). Compare Avett with the musician. How do Avett and the other artist maintain their connections? How do other notable people in the news maintain ties to their hometown?

Extra: Compare and contrast Avett's musical career with another NC musician, such as James Taylor's, whose life has influenced his/her music. Create a digital presentation of the two artists' works and contributions to the people of NC.

Jim Beatty

1. Why did Jim Beatty get up so early when he attending high school?
 - A. He drove a school bus.
 - B. He delivered newspapers.
 - C. He practiced with the track team.
 - D. He belonged to the marching band.
2. Which sport did Beatty choose first?
 - A. boxing
 - B. football
 - C. track
 - D. wrestling
3. Where did Beatty spend most of his early years?
 - A. Chapel Hill
 - B. Charlotte
 - C. Los Angeles
 - D. Manhattan
- 4.



4. Which heading belongs in the circle above?
 - A. Charlotte's Central High School
 - B. Los Angeles Track Club
 - C. University of North Carolina at Chapel Hill
 - D. USA Olympic Track Team

5. What was the "first" that Beatty said could not be taken away?
 - A. 26 American world records
 - B. men's 5000-meter gold medal
 - C. indoor mile in under 4 minutes
 - D. three ACC cross-country championships

6. How did ABC TV honor Jim Beatty?
 - A. produced a documentary on his life
 - B. recognized him for lifetime achievement
 - C. named him first-ever American Athlete of the Year
 - D. sponsored a feature about him in Sports Illustrated

7. Which ended Jim Beatty's track career?
 - A. age
 - B. finances
 - C. illness
 - D. injury

8. How is Beatty described?
 - A. assertive
 - B. honest
 - C. determined
 - D. outgoing

9. What elected office did he hold in Charlotte, after he moved back to Charlotte from California?
 - A. Commissioner
 - B. Mayor
 - C. Member of the School Board
 - D. State legislator

ANSWERS: 1-B, 2-A, 3-B, 4-C, 5-C, 6-C, 7-D, 8-C, 9-D

WORDS:

What does the text tell you about an attribute or meaning of the following? What clues do you find in context? Does any word have a prefix or suffix, similar word or word within the word that aids in defining the word?

1. track
2. elated
3. abrupt

WORDS (parentheses offer text and other clues to meanings of words):

1. track (a sport that involves running)
2. elated (never happier)
3. abrupt (refers to “halt” or stopping suddenly)

WRITING PROMPTS:

Create “talking points” about Beatty to present to your school committee to convince decision-makers to invite Beatty to give a motivational speaker to your school’s student body. Deliver your points in a convincing way to one or more classmates.

If you could hear anyone from news give a motivational speech whom would you choose and why.

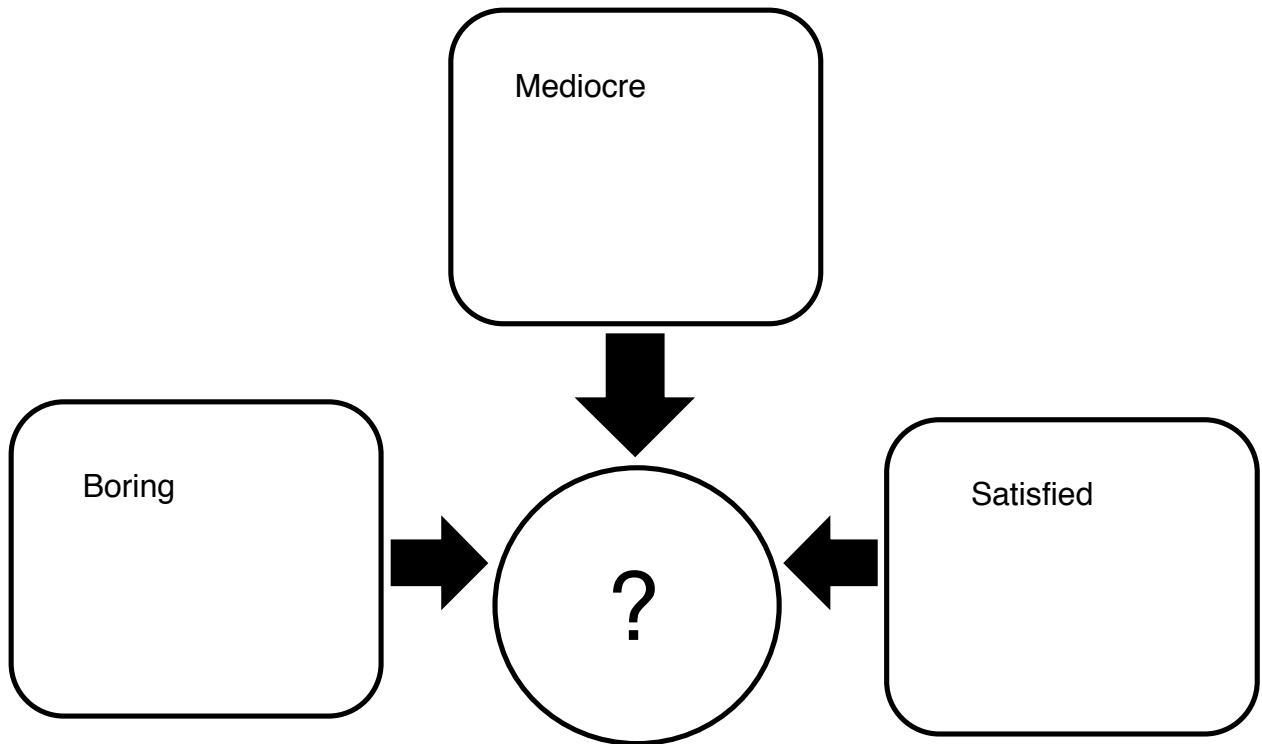
Extra: Compare what Beatty offers as an inspirational speaker with what other individuals profiled in *North Carolinians of Note* offer (Cheek, for example). If you were asked to recommend one to speak to your school, whom would you choose?

Joey Cheek

1. What’s the message in the novella, *Jonathan Livingston Seagull*, that motivates Joey Cheek?
 - A. Be true to yourself.
 - B. Give generously.
 - C. Never give up.
 - D. Play hard or die.
2. To what organization did Cheek give his 2006 Winter Olympics prize money?
 - A. Amnesty International
 - B. Habitat for Humanity
 - C. Right to Play
 - D. Team Darfur
3. What was Joey Cheek’s sport?
 - A. boxing
 - B. figure skating
 - C. indoor track
 - D. speed skating

4. What best describes how success in his chosen sport made Joey Cheek feel?
- A. angry
 - B. anxious
 - C. motivated
 - D. proud
5. What did Joey Cheek study at Princeton?
- A. Chinese culture and economics
 - B. Chinese culture and government
 - C. Economics and literature
 - D. History and literature

6.



6. What was Cheek motivated to do? Which best belongs in the circle above?
- A. give up
 - B. keep up
 - C. step up
 - D. walk up

7. What goal is the writer referring to when he says Cheek wants to get to the “front of the pack?”
- A. Cheek wants to reduce suffering.
 - B. Cheek wants to write computer code.
 - C. Cheek wants to develop intellectually.
 - D. Cheek wants to be world champion in his sport.
8. Which is closest to the meaning of Cheek’s quote? “I think I’ve got more in me,” he says. “Even if not, it could be all right so far.”
- A. Cheek feels pressure to succeed as a humanitarian.
 - B. Cheek focuses on his achievement as a gold medalist.
 - C. Cheek wants to do more but can take pride in what he has accomplished.
 - D. Cheek strives but fails to speak around the world about needy young people.
9. In the novella that inspires Cheek, what does “learn to fly” refer to?
- A. a human who cannot learn
 - B. a human who studies flying
 - C. a seagull who won’t give up
 - D. a seagull who has a broken wing

ANSWERS:

1-B, 2-C, 3-D, 4-B, 5-A, 6-C, 7-A, 8-C, 9-C

WORDS: What does the text tell you about an attribute or meaning of the following? What clues do you find in context? Does any word have a prefix or suffix, similar word or word within the word that aids in defining the word?

- | | |
|---------------|-----------------|
| 1. conform | 4. gusto |
| 2. brief | 5. humanitarian |
| 3. contagious | 6. fable |

WORDS: (parentheses offer text and other clues to meanings of words)

- 1. conform (not being oneself)
- 2. brief (fleeting)
- 3. contagious (inspiring others)
- 4. gusto (“I can do anything.”)
- 5. humanitarian (refers to work helping others in need, e.g. Team Darfur)
- 6. fable (story with meaning deeper than literal meaning, with a message)

WRITING PROMPT:

What motivated Joey Cheek to support humanitarian causes? What motivates others in the news to devote time, energy and funds to humanitarian causes? List all causes and the effects of humanitarian efforts.

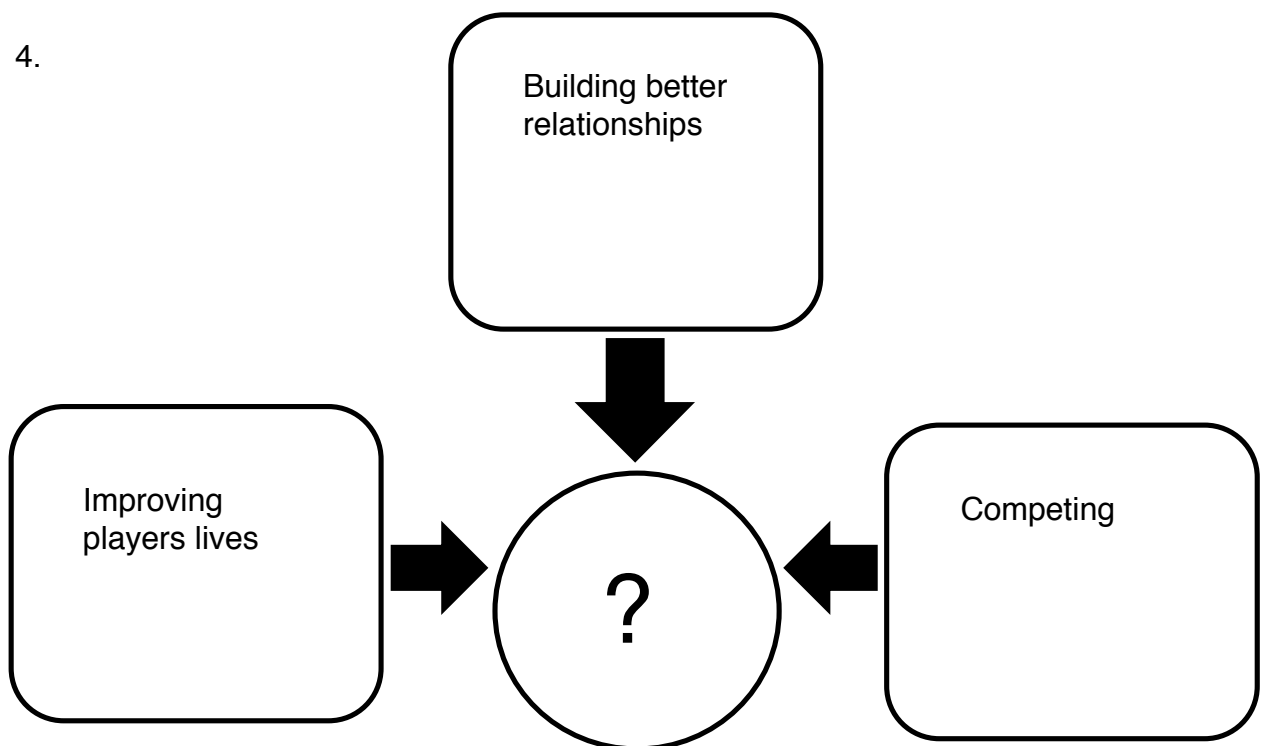
Anson Dorrance

1. What does Anson Dorrance mean when he says, “Are you with me?”
 - A. Did you listen to your coach?
 - B. Did you study the competing team?
 - C. Did you make soccer your top priority?
 - D. Did you show up on time for the game?

2. What is Dorrance’s top priority, according to the players interviewed for the profile?
 - A. advancing soccer
 - B. winning soccer games
 - C. improving players’ lives
 - D. crediting UNC-Chapel Hill

3. Which word best describes Dorrance, according to the players who commented for the profile?
 - A. disciplinarian
 - B. mentor
 - C. reporter
 - D. strategist

4.



4. Which best fits in the circle above, based on the profile?
- A. what Dorrance values
 - B. what soccer promotes
 - C. what Crothers promotes
 - D. what women players value
5. Where was Dorrance born?
- A. Canada
 - B. India
 - C. Kenya
 - D. United States
6. What is Dorrance's top priority, according to Tim Crothers?
- A. advancing soccer
 - B. winning soccer games
 - C. improving players' lives
 - D. crediting UNC-Chapel Hill
7. What is the meaning of "to grow" in this statement by Tim Crothers? "His real mission in his career is to grow the game of soccer, and what it takes to grow the game of soccer is what he wants to do...."
- A. to enlarge
 - B. to mend
 - C. to promote
 - D. to neglect
8. Which is the correct order of events in Dorrance's life?
1. Two of his children attended UNC-CH
 2. He walked on to the men's soccer team at UNC
 3. He became a three-time all ACC player
 4. He chose to coach the women's soccer team
 5. He became coach of the men's soccer team.
 6. He enrolled at St. Mary's in San Antonio, Texas
- A. 6, 2, 3, 1, 4, 5
 - B. 6, 2, 4, 3, 5, 1
 - C. 6, 2, 3, 4, 5, 1
 - D. 6, 2, 3, 5, 4, 1
9. What does "sugar coat" refer to?
- A. Chocolate dip
 - B. Courage
 - C. Energy drinks
 - D. Truth

ANSWERS:

1-A, 2-C, 3-B, 4-A, 5-C, 6-A, 7-C, 8-D, 9-D

WORDS: What does the text tell you about an attribute or meaning of the following? What clues do you find in context? Does any word have a prefix or suffix, similar word or word within the word that aids in defining the word?

- | | |
|--------------|-----------------|
| 1. prominent | 4. authenticity |
| 2. victor | 5. legacy |
| 3. idolized | |

WORDS: (parentheses offer text and other clues to meanings of words)

1. prominent (similar to successful or result of success)
2. victor (result of exchange or back and forth; “or” refers to person or someone who is victorious or winner)
3. idolized (felt honored, excited, nervous, intimidated to talk to “idol”)
4. authenticity (true or person ‘means’ what is said)
5. legacy (what someone has done, what is remembered and carried on)

WRITING PROMPTS:

What do you think Dorrance refers to when he speaks to his biographer about lessons he and his players have taught each other through soccer? “They’ve taught me how to relate better as a human being, and I’ve taught them how to compete. They’ve given me one of the great gifts that women possess, and I’ve given them one of the great gifts that men possess, and I am clearly the victor in the exchange.”

Interview other coaches. Ask what they give to and receive from players on their team. Write what you learn about coaching. Cite sources.

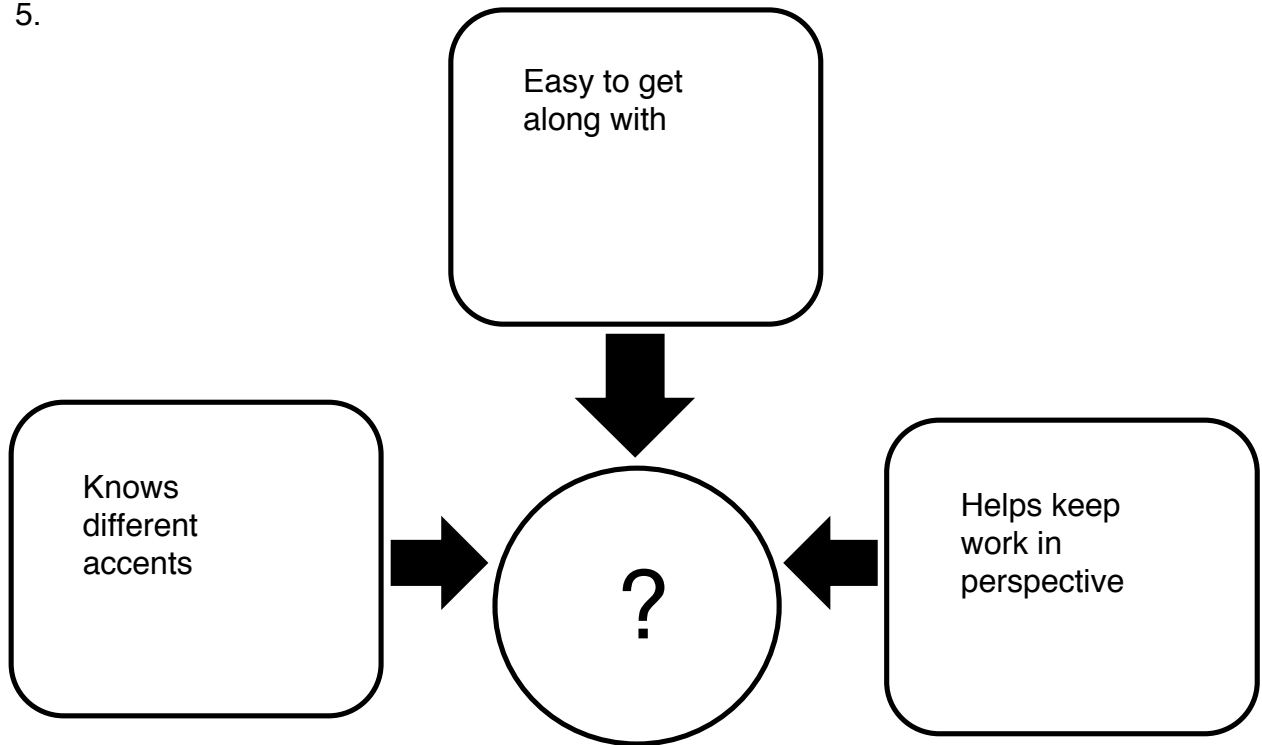
Extra: Examine all of the quotes in the profile. Who was interviewed? Did the person interview Anson Dorrance? Discuss what you find and its implications.

Charles Hadley

1. How did Charles Hadley’s parents view Hollywood?
 - A. challenging and enriching
 - B. crazy and insane
 - C. genuine and enduring
 - D. sinful and wicked
2. Who/ what jumpstarted Charles Hadley’s career as a dialect coach?
 - A. Everett Library

- B. Fulbright scholarship
 - C. Hollywood
 - D. Queens University
3. Who was the film star that Charles Hadley worked with first?
- A. Andy Griffith
 - B. Scarlett Johansson
 - C. Vivien Leigh
 - D. John Travolta
4. Where did Dr. Hadley attend graduate school?
- A. Alabama and UNC-CH
 - B. Georgia and UNC-CH
 - C. Georgia and Queens
 - D. Queens and UNC-CH

5.



5. Which heading best fits in the circle above, according to the profile on Dr. Hadley?
- A. why he worked effectively with students
 - B. why he served as an agent to film stars
 - C. why he succeeded in teaching film stars
 - D. why he had a library named for him at Queens University

6. What does Dr. Hadley believe?
- A. Southern draws improve films.
 - B. Southern accents differ by region.
 - C. Travelers through the South learn accents.
 - D. Film stars should learn deep Southern accents.
7. What does Dr. Hadley share with James Taylor and Roy Williams, according to the writer, according to the profile?
- A. passion
 - B. resilience
 - C. South
 - D. UNC-CH
8. What contribution has Dr. Hadley made, according to the writer?
- A. retold stories about the South
 - B. displayed notable Southern art
 - C. collected books about the South
 - D. preserved original Southern accents

ANSWERS: 1-D, 2-B, 3-C, 4-B, 5-C, 6-B, 7-A, 8-D

WORDS: What does the text tell you about an attribute or meaning of the following? What clues did you find in context? Does any word have a prefix or suffix, similar word or word within the word that aids in defining the word?

- | | |
|------------|------------------|
| 1. fake | 3. linguistics |
| 2. dialect | 4. commemorating |

WORDS: (parentheses offer text and other clues to meanings of words)

- 1. fake (something to avoid, not true)
- 2. dialect (accent or way of speaking)
- 3. linguistics (study of accents and inflections)
- 4. commemorating (remembering what may slip away)

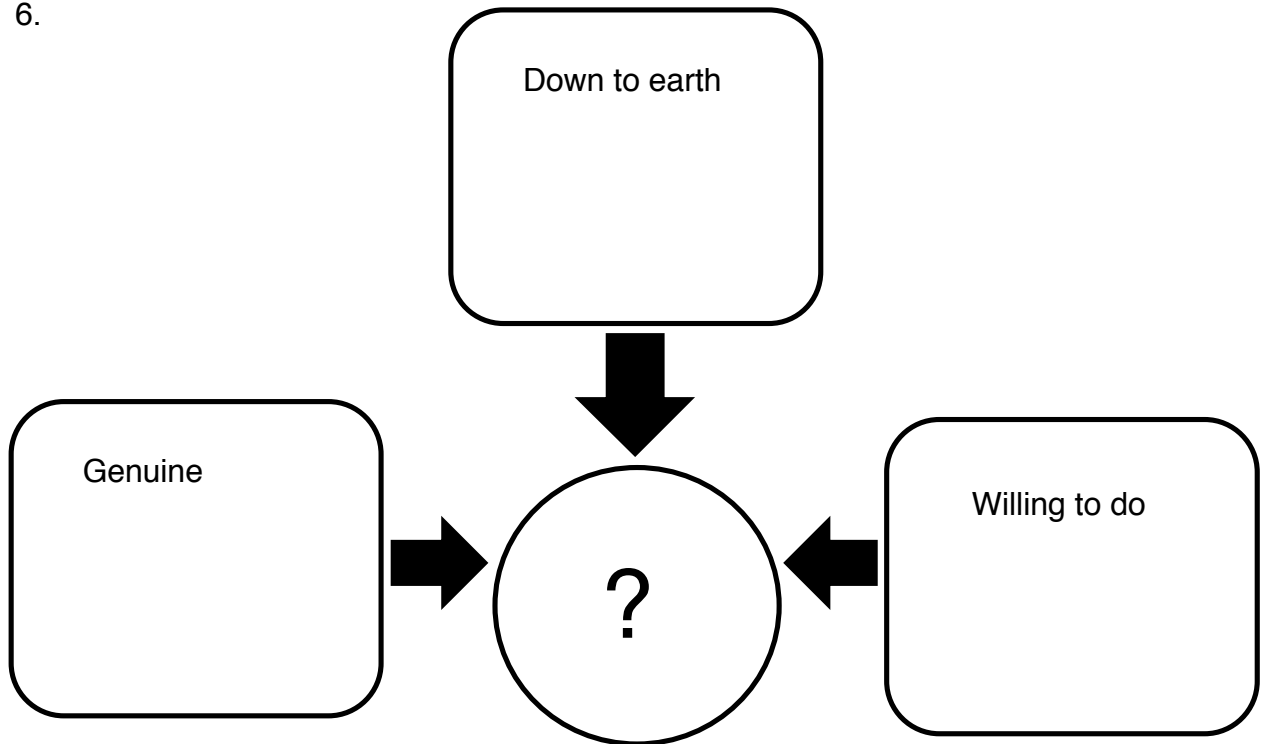
WRITING PROMPT:

What makes Charles Hadley's career "extraordinary?" Find someone in the newspaper whose career has been "extraordinary." Compare the career of the person in the news with Dr. Hadley's career. How are the careers alike? How do the two differ? Use a Venn diagram or other comparison/ contrast organizers.

Franklin McCain

1. What historic event during the Civil Rights movement involved Franklin McCain?
 - A. He was a Freedom Rider who was beaten.
 - B. He participated in a sit-in at McCrory's lunch counter.
 - C. He participated in a sit-in at Woolworth's lunch counter.
 - D. He belonged to the Southern Nonviolent Coordinating Committee.
2. How did McCain's son learn about his early contribution to the Civil Rights movement?
 - A. His father explained to him what happened.
 - B. An ABC News anchor interviewed his father.
 - C. Family friends told him stories about this father.
 - D. He heard his father's speeches to civil rights groups.
3. What does McCain care most about, according to the profile?
 - A. educating his son
 - B. preserving family history
 - C. caring for people in need
 - D. supporting his granddaughter
4. How did Taylor McCain bond with her grandfather?
 - A. visiting the International Civil Rights Center in Greensboro
 - B. receiving her grandmother's valuables from her grandfather
 - C. sharing stories about the early days of the Civil Rights movement
 - D. writing memories that her grandfather shared about growing up in the segregated South
5. What significant contribution does McCain continue to make to his community?
 - A. participating in protests
 - B. supporting young people
 - C. lobbying the state legislature
 - D. serving as an officer of the NAACP

6.



6. Who belongs in the circle above, based on the profile?

- A. Melvin "Skip" Austin
- B. Franklin McCain Jr.
- C. Taylor McCain
- D. Barbara Walters

7. During his growing up years, how did life in the outside world differ from his life at home, according to Franklin McCain?

- A. His parents were stricter than his schools were.
- B. He was reminded he was black in the outside world.
- C. He had to earn money outside the home to support his parents.
- D. He was taught not to fight whatever happened in the outside world.

8. How does McCain describe how he feels today?

- A. hopeful
- B. mad
- C. sad
- D. thankful

ANSWERS: 1-C, 2-B, 3-C, 4-B, 5-D, 6-A, 7-B, 8-B

WORDS: What does the text tell you about an attribute or meaning of the following? What clues do you find in context? Does any word have a prefix or suffix, similar word or word within the word that aids in defining the word?

1. racism
2. fend
3. segregation

WORDS: (parentheses offer text and other clues to meanings of words)

1. racism (denied service at whites-only lunch counter)
2. fend (take care of)
3. segregation (not able to participate, not treated with respect, treated differently because of race)

WRITING PROMPTS:

Who in the news addresses injustice? What form does the “injustice” take? Who are the people addressing the injustice? What are they doing?

Present what you learn about someone today who is addressing injustice.

How are the motives of the person in the news similar to and different from Franklin McCain’s?

Jonathan Reckford

1. Where did Jonathan Reckford grow up?
 - A. California
 - B. New Hampshire
 - C. New York
 - D. North Carolina
2. What were Reckford’s specific areas of study?
 - A. Drama and business
 - B. Economics and government
 - C. Political science and business
 - D. Politics and management
3. Where did Reckford work first after graduating from UNC-CH?
 - A. Best Buy
 - B. Goldman Sachs
 - C. Musicland
 - D. Walt Disney Co.

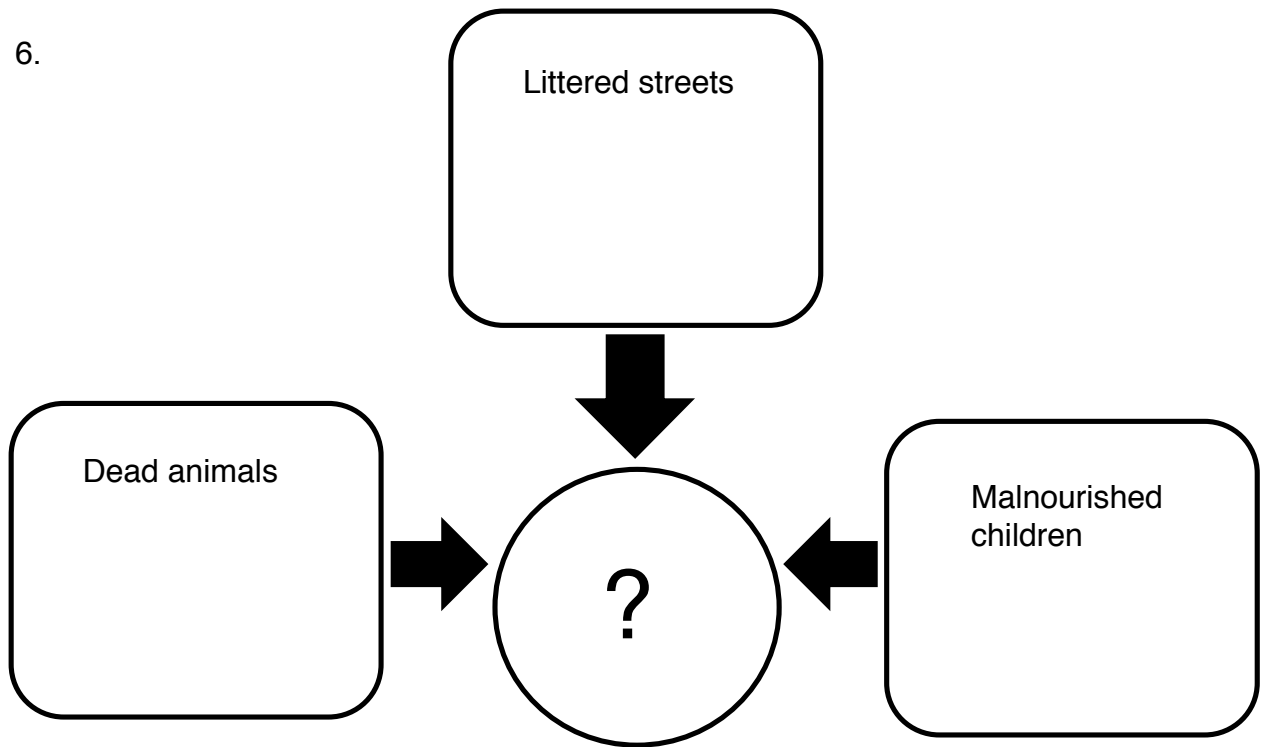
4. Whose words encouraged Reckford to apply his skills to non-profits? (Extra: What did he/she say?)

- A. his father
- B. his rowing coach
- C. an undergraduate professor
- D. a graduate school professor

5. What led to Reckford's work in Asia?

- A. boarding School
- B. Luce Foundation Scholarship
- C. Morehead Scholarship
- D. rowing team

6.



6. Which heading belongs in the circle above?

- A. gender equity
- B. global poverty
- C. health issues
- D. voting rights

7. How did Reckford become involved with Habitat for Humanity?
- A. His church recommended him for the position of CEO for Habitat.
 - B. He received a phone call from someone helping Habitat find its CEO.
 - C. His company offered him a year off to serve as interim CEO for Habitat.
 - D. He worked his way from state level leadership to the position of CEO for Habitat.
8. What is the false dichotomy that Reckford describes?
- A. Service vs. faithful
 - B. Faithful vs. grassroots
 - C. Professional vs. faithful
 - D. Organized vs. professional
9. Which best represents Reckford's view of former President Jimmy Carter?
- A. Carter gives funds to Habitat.
 - B. Carter travels around the world.
 - C. Carter is too old to build houses.
 - D. Carter treats everyone the same.
10. What does Reckford mean when he says, Habitat's work is "handing up, not handing out?"
- A. Home ownership represents a gift.
 - B. Home ownership erases people's debt.
 - C. Home ownership empowers people to do more.
 - D. Home ownership allows people to take care of their families.
11. Which word best describes Reckford, according to the profile?
- A. consultant
 - B. religious
 - C. scientist
 - D. skeptical

ANSWERS:

1-D, 2-C, 3-B, 4-D, 5-B, 6-B, 7-B, 8-C, 9-D, 10-C, 11-B

WORDS: What does the text tell you about an attribute or meaning of the following? What clues do you find in context? Does any word have a prefix or suffix, similar word or word within the word that aids in defining the word?

- 1. nonprofit
- 2. crystallized
- 3. inclusive
- 4. dichotomy
- 5. volunteers

WORDS: (parentheses offer text and other clues to meanings of words)

1. nonprofit (“non” refers to “not”; story compares Habitat with “for profit” companies)
2. crystallized (similar “to clear as crystal,” which means making clear or evident; leaving no question)
3. inclusive (serving all faiths and backgrounds)
4. dichotomy (either/or; two opposing options)
5. volunteers (workers who are not paid)

WRITING PROMPTS:

What caused Reckford to switch the focus of his career?

Identify someone in the news who switched careers? What caused the change?

Did the person choose the change?

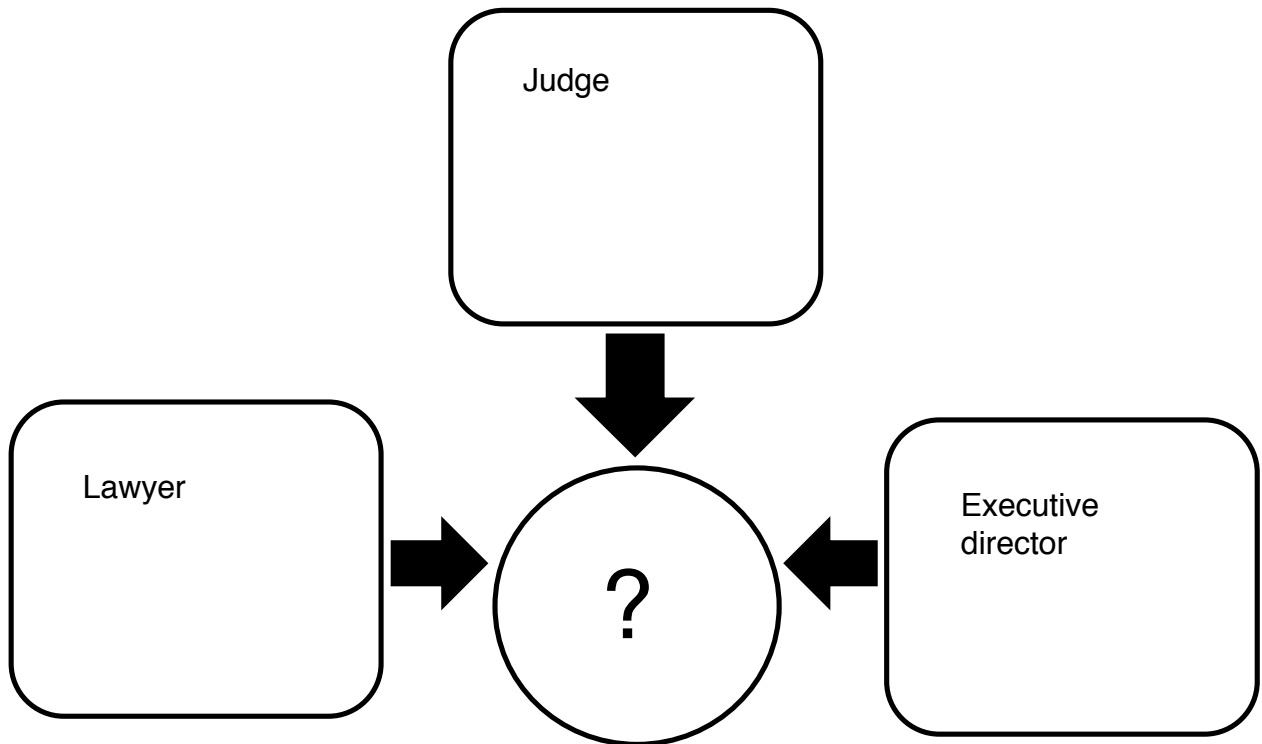
Choose a format to explain the changes and different viewpoints on the changes, Include your thoughts on why and how each person changed his/ her career.

Extra: Compare Reckford’s change in direction with changes chosen by other individuals featured in profiles written for North Carolinians of Note (Eben Alexander or Tom Ross, for example).

Tom Ross

1. Where does UNC system president Tom Ross spend most of his time?
 - A. In meetings
 - B. On the phone
 - C. On campuses
 - D. In press conferences
2. How many schools and students make up the UNC system?
 - A. 15 and 200,000
 - B. 17 and 220,000
 - C. 20 and 300,000
 - D. 22 and 250,000
3. Which job did Ross leave to become president of the UNC school system?
 - A. Executive director of the Z. Smith Reynolds Foundation
 - B. Judge of N.C. Superior Court
 - C. Lawyer in Greensboro
 - D. President of Davidson College

4.



4. Which heading describes best the above jobs, held by Tom Ross?
- A. in universities
 - B. in the private sector
 - C. outside criminal justice
 - D. outside higher education
5. What motivated Ross to take positions in higher education?
- A. advocacy for environmental causes
 - B. closing wealth gaps
 - C. impact on students
 - D. influence on public policy
6. How did Ross contribute to the legal system before leaving Greensboro?
- A. He instituted mandatory sentencing.
 - B. He lengthened sentences for non-violent crimes.
 - C. He led fundraising efforts to build a new courthouse.
 - D. He toughened sentencing for violent and repeat offenders.

7. How has Ross approached every job he has taken on, according to his friend Jim Drennan?

- A. tackled any problem
- B. supported worthy efforts
- C. addressed legal concerns
- D. understood the complexity of issues

8. Which word best describes Ross' view of UNC school system's future?

- A. cautious
- B. optimistic
- C. productive
- D. skeptical

ANSWERS:

1-A, 2-B, 3-D, 4-D, 5-C, 6-D, 7-A, 8-B

WORDS: What does the text tell you about an attribute or meaning of the following? What clues do you find in context? Does any word have a prefix or suffix, similar word or word within the word that aids in defining the word?

- | | |
|-------------|---------------|
| 1. temporal | 3. knack |
| 2. hectic | 4. optimistic |

WORDS: (parentheses offer text and other clues to meanings of words)

- 1. temporal (short-term, likely to be overturned; similar to temporary)
- 2. hectic (long to-do list; intense, fast-paced)
- 3. knack (synonyms: skill, talent)
- 4. optimistic (future is bright)

WRITING PROMPTS:

Explain what this tells you about Tom Ross and his motivations: "Striving to make a difference in the lives of others....That's the reason I get up every day, to try and matter."

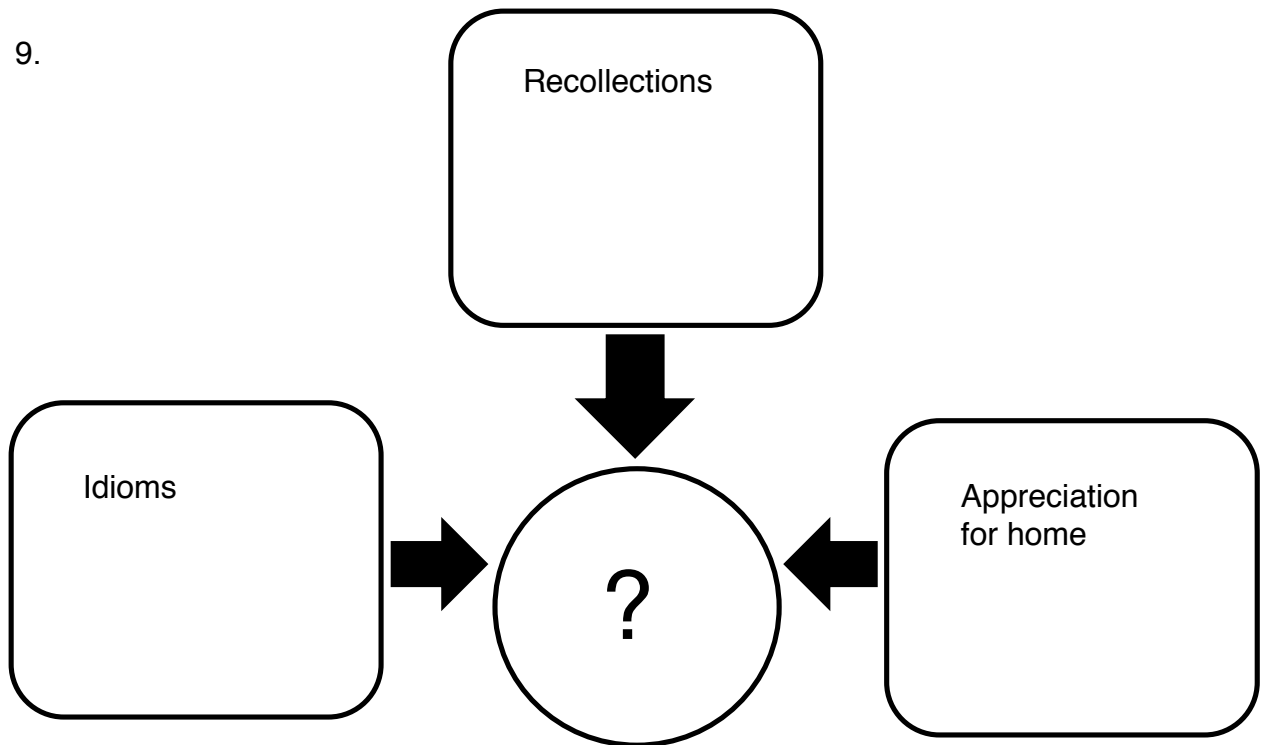
Identify others featured in news stories, books and other sources whom you think are motivated to make a positive difference in the lives of others. Explain their actions/choices. Cite sources in your presentation.

Bellamy Young

1. Who are the main characters in “Scandal?”
 - A. Cyrus and Mellie
 - B. Fitz and Mellie
 - C. Fitz and Olivia
 - D. Olivia and Mellie
2. Where was Bellamy Young born?
 - A. Asheville
 - B. Durham
 - C. Greensboro
 - D. Wilmington
3. How does the online newspaper, *The Huffington Post*, describe Young, according to the profile?
 - A. manipulative
 - B. scene stealer
 - C. political fixer
 - D. convincing drunk
4. According to the story, what makes Mellie a complex character?
 - A. She shows many sides.
 - B. She speaks with a Southern drawl.
 - C. She displays both anger and humility.
 - D. She’s in a Romeo and Juliet-style romance.
5. How was Mellie’s character treated when “Scandal” first started?
 - A. She was written into three episodes.
 - B. She was left out of important scenes.
 - C. She appeared alongside Jeff Perry’s Cyrus Beene.
 - D. She became a permanent obstacle to the love affair.
6. According to critic Ryan McGee, what do viewers feel for Mellie?
 - A. anger
 - B. empathy
 - C. loyalty
 - D. sympathy
7. How did Mellie respond when Olivia lived through an explosion?
 - A. She celebrates that Olivia survived.
 - B. She is angered by Olivia’s surviving.
 - C. She tells the press about the love affair.
 - D. She gets drunk to celebrate the explosion.

8. How does she view North Carolina?
- A. She avoids using Southern accents.
 - B. She remembers childhood trips and picnics.
 - C. She supports her husband's political career in NC.
 - D. She plans to make California her permanent home.

9.



9. What heading best fits in the circle above, based on the profile about Bellamy Young?

- A. California home
- B. Hollywood script
- C. Southern roots
- D. New York plays

10. What trait does Young say she and the TV-character have in common?

- A. faith
- B. hope
- C. joy
- D. loyalty

11. What does the Twitter “hashtag BelleEMMY” refer to, according to the profile?
- A. her role
 - B. her name
 - C. TV awards
 - D. movie awards

ANSWERS:

1-C, 2-A, 3-B, 4-A, 5-A, 6-B, 7-A, 8-B, 9-C, 10-D, 11-D

WORDS: What does the text tell you about an attribute or meaning of the following? What clues do you find in context? Does any word have a prefix or suffix, similar word or word within the word that aids in defining the word?

- | | |
|-----------------|--------------|
| 1. overshadowed | 4. alter ego |
| 2. buzz | 5. hashtags |
| 3. dubbed | 6. idioms |

WORDS: (parentheses offer text and other clues to meanings of words)

- 1. overshadowed (TV show is centered around Olivia Pope)
- 2. buzz (synonyms, in this context: talk, speak, often excitedly)
- 3. dubbed (synonyms, in this context: called, named)
- 4. alter ego (Mellie and Bellamy are similar in an important way)
- 5. hashtags (symbol # in Tweets to show key words, topics, such as Mellie or BelleEMMY, in story)
- 6. idioms (gives “bless your heart” as an example of Southern idiom; a significance greater than literal meaning)

WRITING PROMPTS:

The profile uses numerous adjectives to describe the character Mellie in “Scandal,” including: formidable, brilliant, manipulative, scorned, reluctant, insecure, hilarious, loyal, fierce, caustic and layered.

Prepare an outline for descriptive writing. Write Mellie in the center and four “best” descriptive words that apply to her, outside the center. Extend the outline; outside the words, record quotes spoken by the character or the actress about the character and actions that support your choice of the words. Use the outline to write description of Mellie.

Apply the same approach to descriptive writing about people in the news and important people in history and significant characters in literatures. Use the outline to write description of the person or persons.

Extra: Eileen Fulton, also born in Asheville, played a controversial role in the long-running soap opera, “As the World Turns.” Conduct research on the actress and the character she played.

Create a Venn diagram in which you compare the careers of the two North Carolina actresses. Write a comparison/contrast paper based on your diagram.

Prepared by the NC Press Foundation, NC NIE, sandynie@unc.edu, (919) 843-5648.
December 2013